



riverview
HEIGHTS



ELEV. A - BW-503

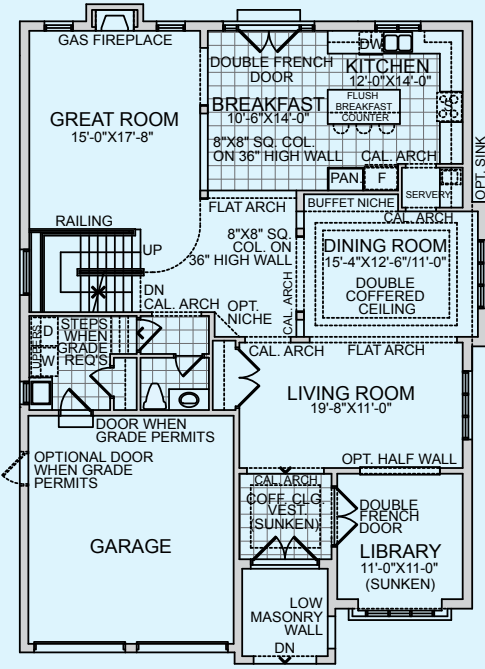


ELEV. B - BW-503

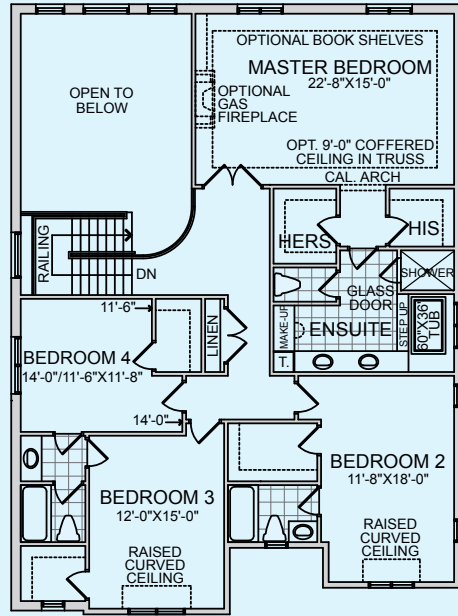
Rankin
50' SERIES



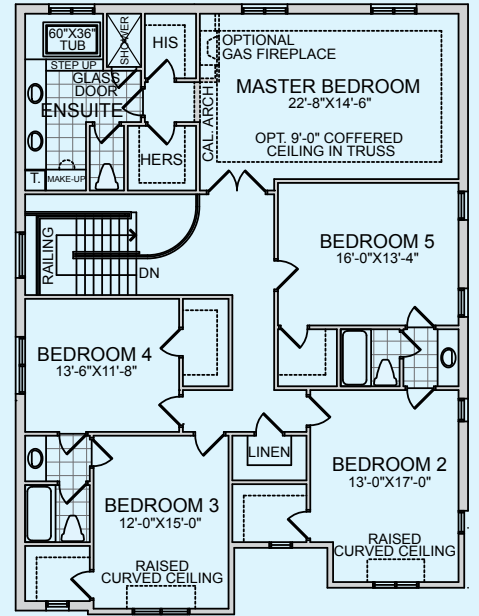
GROUND FLOOR - ELEV. A
TYPE BW-503 G.F.A. = 3492 SF.
 G.F.A. w/ opt. b5 = 3778 SF.
 (includes 53 sf. fin. basement area)



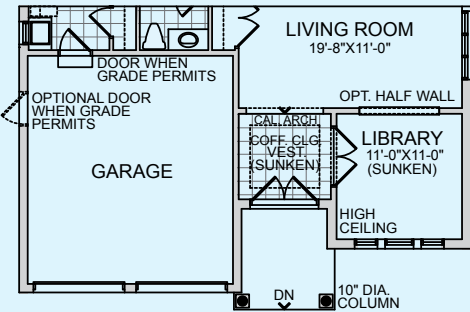
SECOND FLOOR - ELEV. A
TYPE BW-503



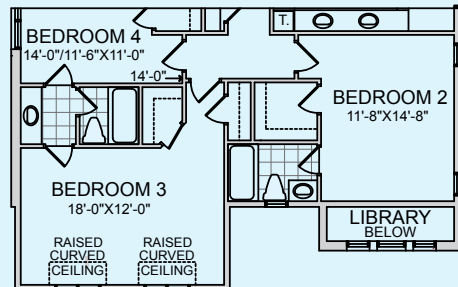
OPTIONAL SECOND FLOOR
PLAN W/ BED 5 - ELEV. A
TYPE BW-503



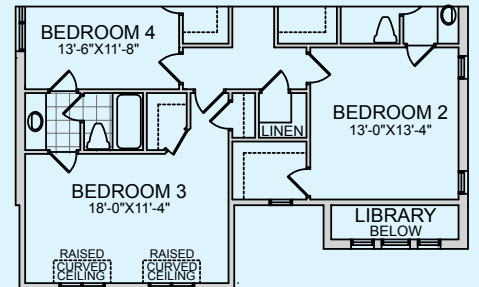
PARTIAL GROUND FLOOR
ELEV. B
TYPE BW-503 G.F.A. = 3459 sf.
 G.F.A. w/ opt. b5 = 3745 SF.
 (includes 53 sf. fin. basement area)



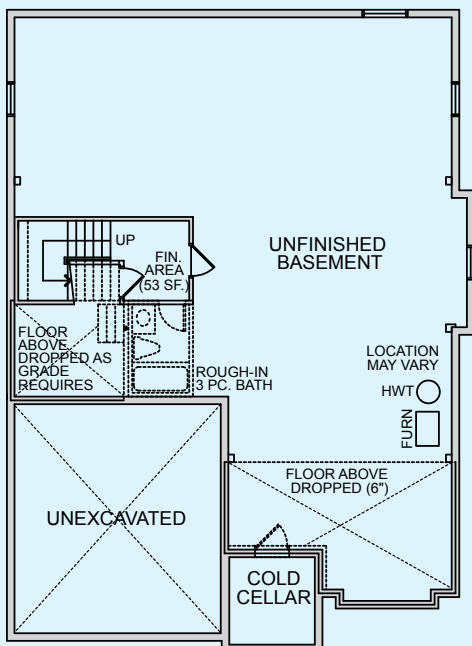
PARTIAL SECOND FLOOR
ELEV. B
TYPE BW-503



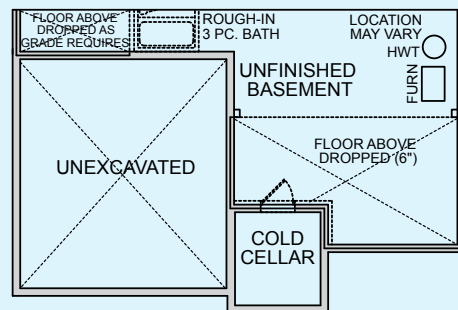
PARTIAL OPTIONAL SECOND
FLOOR PLAN W/ BED 5
ELEV. B
TYPE BW-503



BASEMENT - ELEV. A
TYPE BW-503



PARTIAL BASEMENT ELEV. B
TYPE BW-503



Materials, specifications and floor plans are subject to change without notice. All renderings are artist's conceptions. All floor plans are approximate dimensions. Actual usable floor space may vary from stated floor areas. E.&O.E. 2013

